



# ELEMENT SONAR/GPS WITH HYPERVISION

Built for anglers that want to be one step ahead of the game, Element delivers the sharpest view of the underwater world with HyperVision™ 1.2 megahertz super high-resolution sonar. HyperVision takes DownVision, SideVision, and Raymarine RealVision 3D sonar to the next level of precision imaging and fish identification, letting you see structures, vegetation, and fish with lifelike clarity.





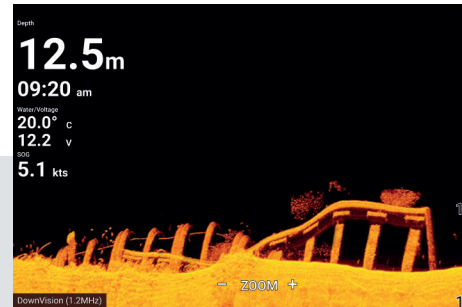
### Simple, Fast Operation

Element's LightHouse Sport operating system delivers a simplified user experience with intuitive keypad control. Quickly mark fishing spots and access your favourite pages with the press of a button. Quad-core performance delivers instant chart redraw, smooth 3D imaging, and fast response while on the water.



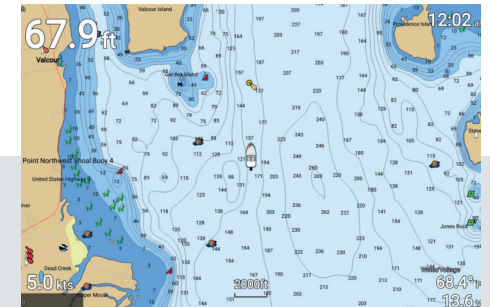
### All-in-One Transducer

The compact HV-100 transducer is simple to install and supports RealVision 3D, DownVision, SideVision, high-frequency CHIRP and 1.2 MHz HyperVision. A high precision water temperature sensor is standard, and the HV-100 is convertible for transom or trolling motor mounting. Through-hull versions are also available.



### See More with Precision Sonar

Element's 1.2 megahertz HyperVision™ takes sonar to a new level of precision. DownVision, SideVision, or stunning RealVision 3D, Element's HyperVision™ mode lets you view structure and target fish with lifelike clarity, helping you to see and catch what other anglers can't.



### All the Best Maps

Element's powerful chartplotter supports vector and raster electronic charts from LightHouse NC2, Navionics, C-MAP, Standard Mapping, CMOR Mapping, and many other publishers. Make custom bathymetric maps on the fly using Navionics SonarChart Live or Raymarine's new RealBath™ real-time map generator.